



Spontaneous adventures
made possible by the

TARGA 48 GT



Every. Perfect. Detail.



TARGA
48 GT

INTRODUCTION

MAIN
FEATURES

EXTERIOR
DESIGN

INTERIOR
DESIGN

PRINCIPLE
DIMENSIONS

GENERAL
ARRANGEMENTS

CELEBRATING
50 YEARS

DEALERS



Discover what's round the next bay in style

The seas are beckoning, the wine is chilled and everyone's on board. The exceptional engineering of the Targa 48 GT means you can go further, explore more and extend your stay with ease.

Combining the luxury of a spacious, sociable upper deck with a well-appointed helm station and twin seats, the Targa 48 GT enables you to share the thrill of discovery in comfort. Add to that the new signature Alberto Mancini-designed windows, which sweep across its hull, and you have a craft that exudes as much style as it does performance and power.

Then, let's not forget all the new technologies come as standard. Such as the electric, hard-top roof, coupled with panelled glazing. With one elegant sweep, the Targa 48 GT lets sunlight flood in, whilst its powerful IPS engines deliver an agile performance that responds to the thrill of the journey ahead – wherever it may take you.



TARGA
48 GT

INTRODUCTION

MAIN
FEATURES

EXTERIOR
DESIGN

INTERIOR
DESIGN

PRINCIPLE
DIMENSIONS

GENERAL
ARRANGEMENTS

CELEBRATING
50 YEARS

DEALERS


FAIRLINE
YACHTS

Share the experience, comfortably

The Targa 48 GT has perfectly thought-through features, such as a J-shaped seating in the cockpit, with the option to specify a teak table that converts to a sunpad. Perfect for complete open-to-the-skies living and stylish entertaining, day or night.

- **Electric retractable glazed roof with one-touch operation and pneumatic seal**
- **Enclosed main deck saloon**
- **Large mid-master cabin with en suite and separate shower compartment**
- **Companion seating area opposite helm**
- **Opening windows to helm and saloon**
- **Full-height fridge/freezer**

Optional equipment highlights:

- V-berth forward guest cabin
- Single crew cabin
- Third cabin in lieu of lower saloon
- Sofa convertible to third berth to master cabin
- Submersible bathing platform
- Gyroscopic stabiliser
- A choice of powerful engines:
 - 2 x Volvo Penta IPS600 D6-435, diesel with 435mhp each and a maximum speed of 30 knots
 - 2 x Volvo Penta IPS700 D8-550, diesel with 550mhp each and an estimated maximum speed of 32 knots



TARGA
48 GT

INTRODUCTION

MAIN
FEATURES

EXTERIOR
DESIGN

INTERIOR
DESIGN

PRINCIPLE
DIMENSIONS

GENERAL
ARRANGEMENTS

CELEBRATING
50 YEARS

DEALERS


FAIRLINE
YACHTS



TARGA
48 GT

INTRODUCTION

MAIN
FEATURES

EXTERIOR
DESIGN

INTERIOR
DESIGN

PRINCIPLE
DIMENSIONS

GENERAL
ARRANGEMENTS

CELEBRATING
50 YEARS

DEALERS


FAIRLINE
YACHTS



TARGA
48 GT

INTRODUCTION

MAIN
FEATURES

EXTERIOR
DESIGN

INTERIOR
DESIGN

PRINCIPLE
DIMENSIONS

GENERAL
ARRANGEMENTS

CELEBRATING
50 YEARS

DEALERS


FAIRLINE
YACHTS

Memories to treasure, created by halcyon days and overnight stays on the Targa 48 GT



TARGA
48 GT

INTRODUCTION

MAIN
FEATURES

EXTERIOR
DESIGN

INTERIOR
DESIGN

PRINCIPLE
DIMENSIONS

GENERAL
ARRANGEMENTS

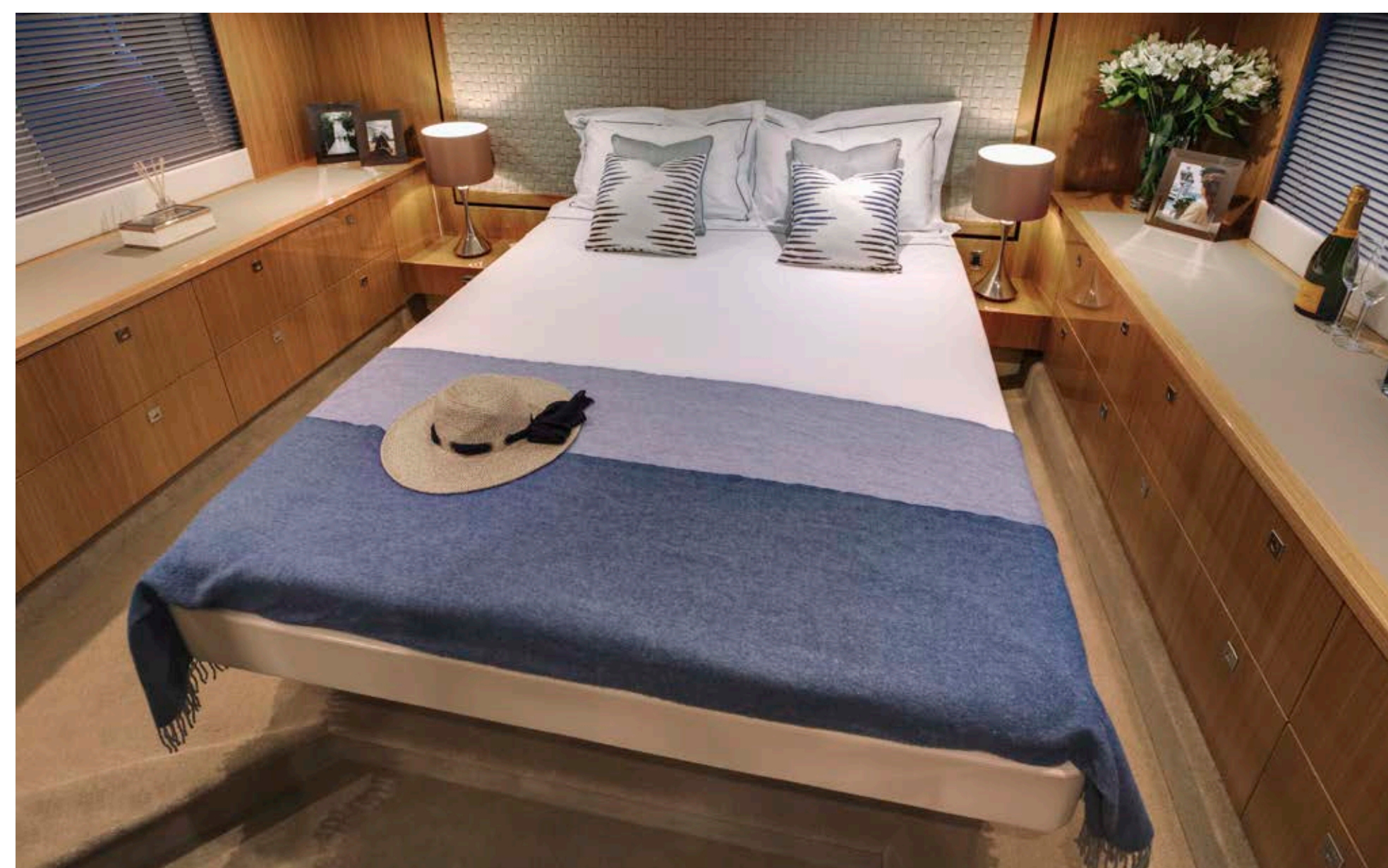
CELEBRATING
50 YEARS

DEALERS


FAIRLINE
YACHTS

The inside is an adventure too

In the spirit of building the perfect yacht at every possible level, we have also carefully created four different interior design schemes for you to choose from:



AMALFI

Inspired by Liguria's local architecture, this scheme exudes the sunny warmth synonymous with fragrant Italian lemon trees and the umbrella-lined shores of the Amalfi coast.



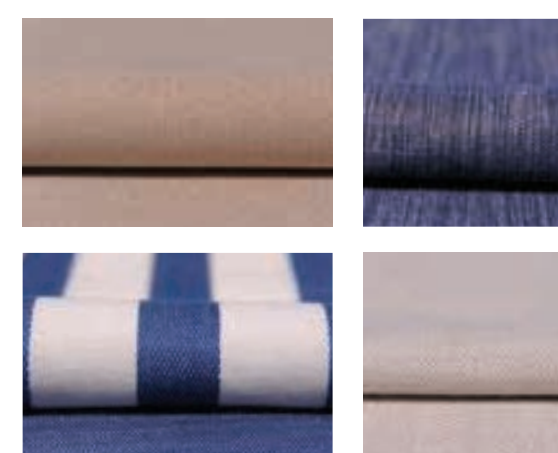
CAPRI

Understated, earthy colours, effortlessly combined with rich natural textures. All the hallmarks of an interior design collection that is as gentle as the Mediterranean breeze.



HAMPTONS

Evoking elegant vintage design cues, whilst offering a bold and contemporary interpretation of the luxury that was once the preserve of America's East Coast.



ST. TROPEZ

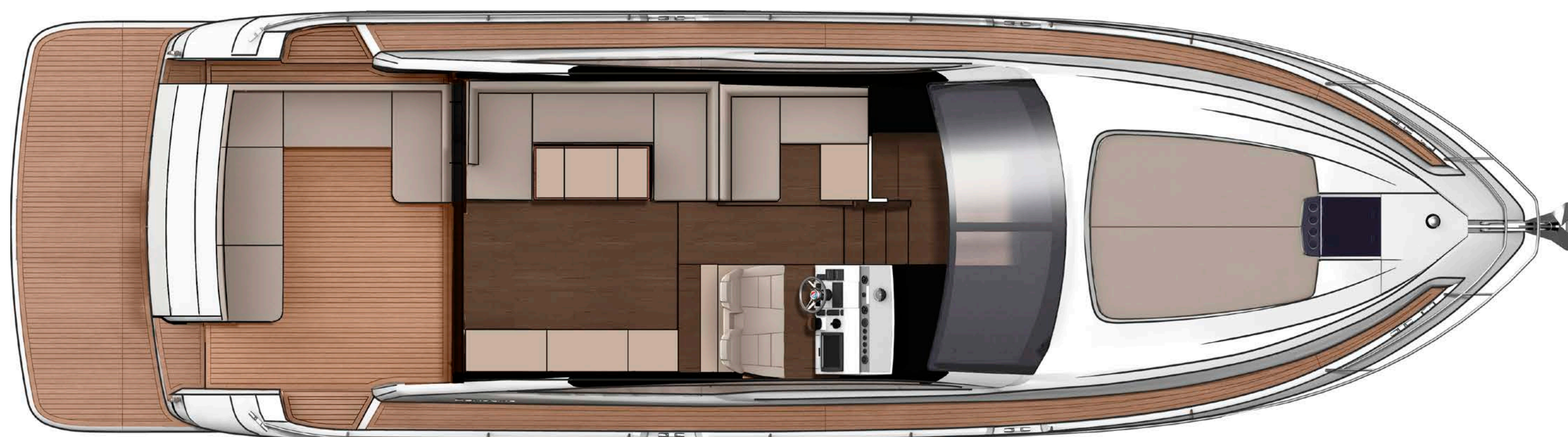
An ode to the sea where all manner of deep, oceanic blues tastefully swirl with muted greys, delicate creams and classic nautical motifs.



More space and capacity

- Length overall (inc. pulpit) fixed platform: 49'2" (15.0m)
- Length overall (exc. pulpit) fixed platform: 48'6" (14.8m)
- Length overall (inc. pulpit) submersible platform: 51'4" (15.64m)
- Length overall (exc. pulpit) submersible platform: 50'8" (15.44m)
- Beam (inc. gunwale): 14'2" (4.32m)
- Number of berths: 4 – 7
- Draught: 3'10" (1.18m) unloaded
- Height above waterline (inc. arch & nav. light mast): 15'1" (4.6m)
- Transport height: 15'10" (4.83m)
- Dry weight (approx.): 13.28 imp. tons / 14.88 US tons (13,500kg)
- Fuel capacity: 288 gallons / 346 US gallons (1,309 litres)
- Water capacity (inc. calorifier): 106 gallons / 127 US gallons (482 litres)

[CLICK HERE FOR
FULL SPECIFICATIONS](#)



Main Deck

With its hard-top sun roof and luxurious seating, the Targa 48 GT offers bright, light and companionable space.



Main Deck – Galley Up

For those who don't like to miss out on the action, there is also an option to locate the galley on the main deck.



TARGA
48 GT

INTRODUCTION

MAIN
FEATURES

EXTERIOR
DESIGN

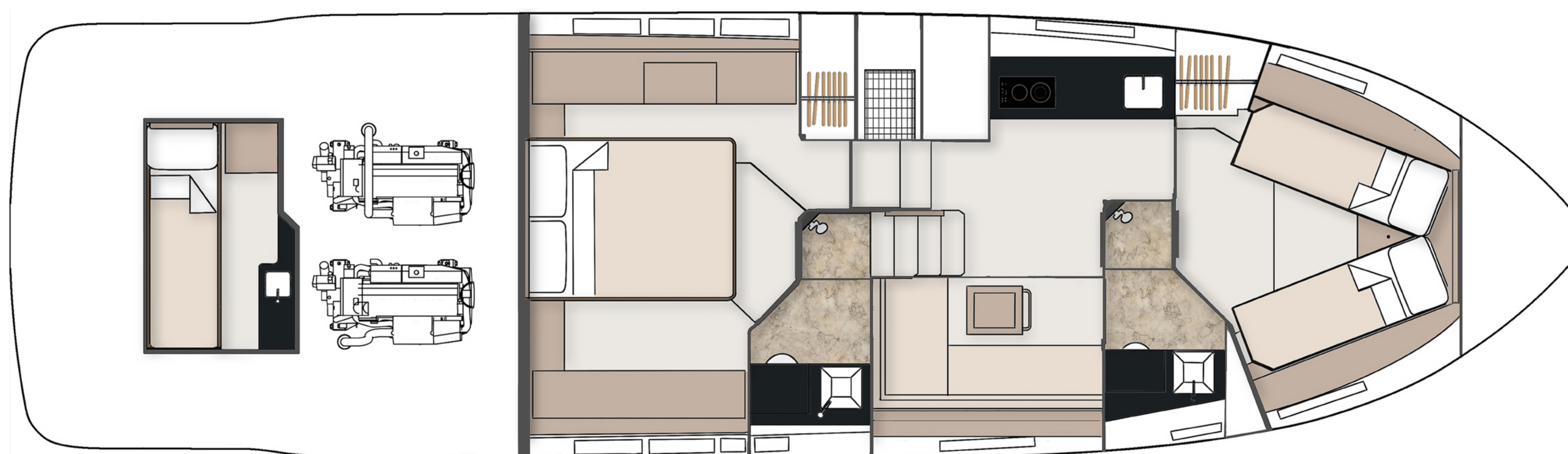
INTERIOR
DESIGN

PRINCIPLE
DIMENSIONS

GENERAL
ARRANGEMENTS

CELEBRATING
50 YEARS

DEALERS



Lower Deck – 2 Cabin

The lower deck is spacious enough to suit you and your guests needs, thanks to the comfortable lower saloon, a fully-equipped galley and bulkheads elegantly covered in soft leather.



TARGA
48 GT

INTRODUCTION

MAIN
FEATURES

EXTERIOR
DESIGN

INTERIOR
DESIGN

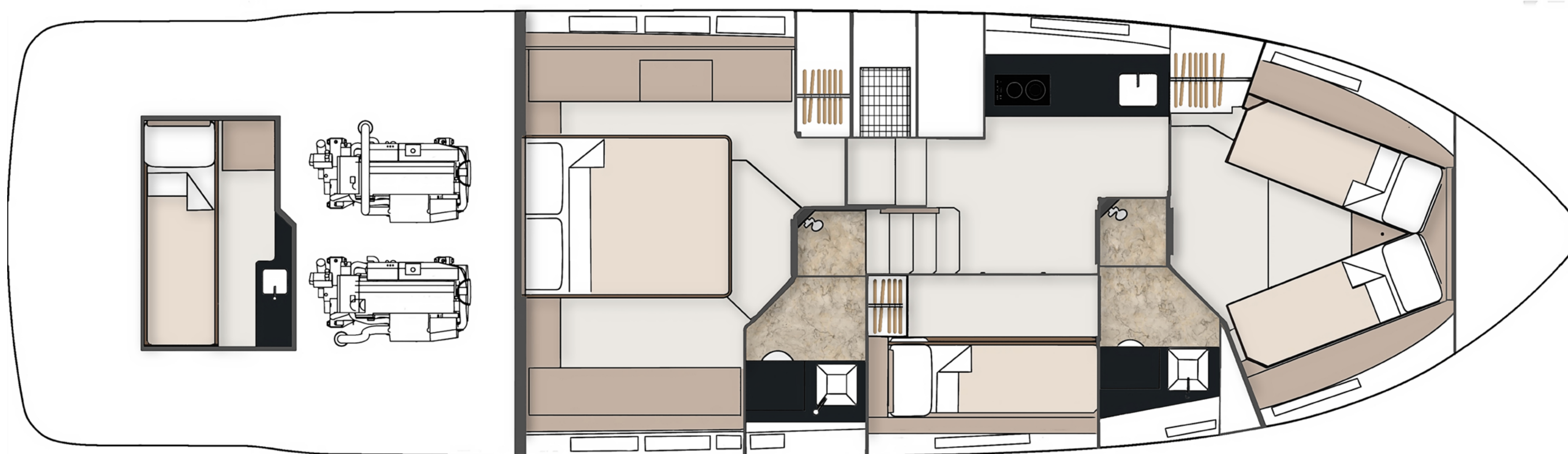
PRINCIPLE
DIMENSIONS

GENERAL
ARRANGEMENTS

CELEBRATING
50 YEARS

DEALERS


FAIRLINE
YACHTS



Lower Deck – 3 Cabin

Alternatively, replace the lower saloon with a third cabin which adds two full-length bunk beds to the arrangement.

(Both 2 and 3-cabin configurations include the option to add a single-bed aft crew cabin).

Last year we celebrated our 50th anniversary

It was truly a Year Of Golden Moments

It's not enough to build a beautiful boat just for the sake of it. Building the kind of yachts which we are proud to put the Fairline name to, requires something more than just engineering genius or craftsmanship. It also requires the desire to create extraordinary moments for whoever owns it. Moments of joy, exhilaration, excitement...and even tranquility.

With 2017 being our 50th Anniversary, we took every possible opportunity to celebrate those incredible, golden moments since the brand's founder Jack Newington first launched the famous Fairline 19. This included moments like winning the World Yacht Trophy for 2017, becoming a finalist for the Motor Boat of the Year 2018 and being nominated for the European Powerboat of the Year 2018!



INTRODUCTION

MAIN
FEATURES

EXTERIOR
DESIGN

INTERIOR
DESIGN

PRINCIPLE
DIMENSIONS

GENERAL
ARRANGEMENTS

CELEBRATING
50 YEARS

DEALERS

An unrivalled dealership network

Just like the many parts that make up one of our extraordinary yachts, so too are international dealers handpicked and perfectly placed to cover anything and everything you could want from Fairline (you can visit fairline.com for details of your nearest dealer).

Fairline Argentina
Fairline Benelux & W. Germany
Fairline Brazil
Fairline Channel Islands
Fairline Chertsey
Fairline Chesapeake
Fairline Colombia
Fairline Costa Blanca
Fairline Côte d'Azur
Fairline Croatia

Fairline Cyprus
Fairline Denmark
Fairline Eastbourne
Fairline Florida
Fairline Great Lakes
Fairline Greece
Fairline Hong Kong
Fairline Ibiza
Fairline India
Fairline Israel

Fairline Italia
Fairline Japan
Fairline Korea
Fairline Lebanon
Fairline Malta
Fairline Menorca
Fairline Mexico
Fairline Middle East
Fairline Monaco
Fairline New South Wales

Fairline New York
Fairline New Zealand
Fairline North Mallorca
Fairline Poland
Fairline Portugal
Fairline Queensland
Fairline Russia
Fairline Singapore
Fairline South Africa
Fairline South China

Fairline South Mallorca
Fairline Southampton
Fairline Sverige
Fairline Switzerland
Fairline Thailand
Fairline Torbay
Fairline Turkey
Fairline Ukraine
Fairline Victoria
Fairline Western Australia



TARGA 48 GT